



Cryogenic Canister Freezer

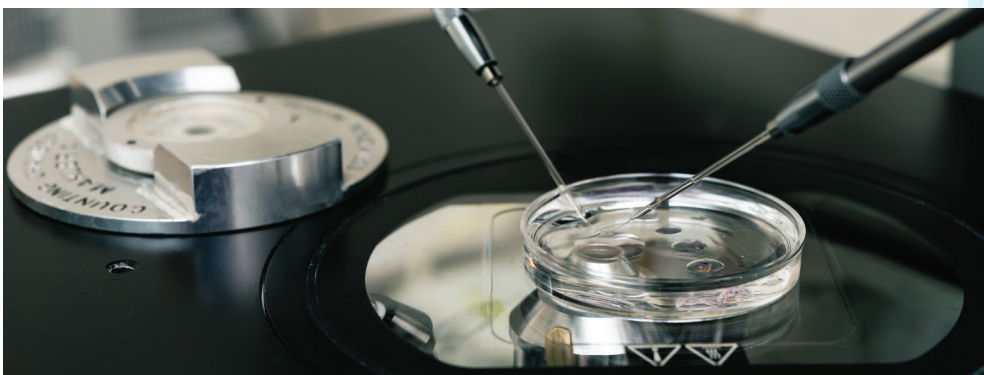
phasetwo's Cryogenic Canister Freezer (CCF) provides customers with the latest technology in the traditional sizes. Our premium multi-layer insulation and other materials, together with the latest vacuum technology systems, results in industry leading performance. Engineering utilized finite element analysis, with specific testing to create durable aluminum freezers suitable for today's requirements.

We custom designed our one-piece lid to enable the operator to remove the lid, securely position it on one of the handles, and have both hands free to quickly access samples.

The design provides a dedicated and fixed position for the optional Low Level and Temperature Alarm (LLTA). The LLTA continues to monitor the freezer's temperature and liquid level while product is removed or inserted, providing product security.

FEATURES

- **New one-piece lockable lid design.**
- **Low Level and Temperature Alarm remains in place while product is inserted or removed for product security.**
- **Premium materials provide industry leading LN2 performance**
- **Location to store removed Neckplug for faster access to the product.**
- **Largest storage capacity.**
- **Numbered canister locations and color-coded handles for easy product identification.**





phasetwo®

GENERAL SPECIFICATIONS

CCF-Series Model	CCF35H	CCF35V
LN2 Capacity (L)	35	35
Outer Diameter (in/mm)	18.8 (448)	18.8 (448)
Overall Height (in/mm)	26.3 (668)	26.3 (668)
Neck Opening (in/mm)	4.7 (119)	4.7 (119)
Canister Dims. (in/mm)	2.64x11 (67x279)	3.7x11 (94x279)
Weight Full (lbs/kg)	101 (45.9)	100 (45.5)
Weight Empty (lbs/kg)	39 (17.7)	38 (17.3)
Evaporation Rate (L/day)	0.27	0.27
Static Holding Time (days)	130	130
Number of Canisters	10	6
1.2 & 2ml Vial (6/cane)	1020	1260
1/2cc Straws (10/cane)	2800	3000

