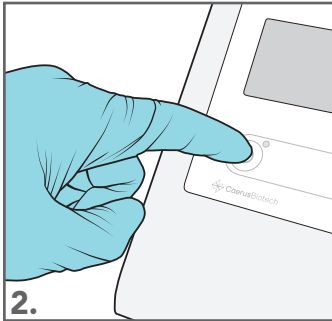


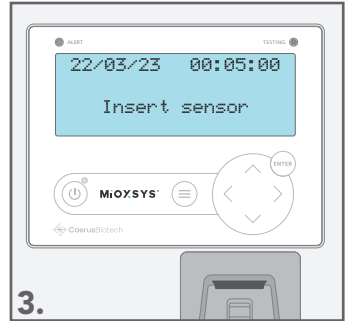
1.

Semen sample should be collected in accordance with published guidelines for collection and liquefaction for semen analysis.



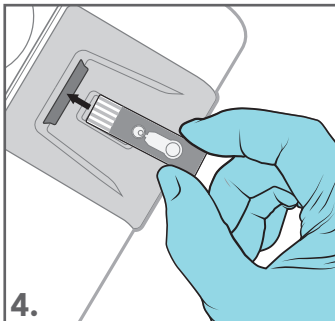
2.

Press the power button on the MiOXSYS Analyzer.



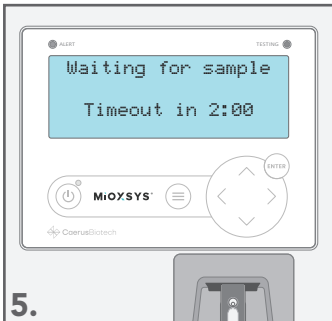
3.

"Insert Sensor" text, current date and time will be visible on the display.



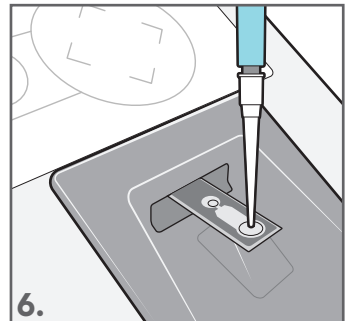
4.

Unwrap an individual MiOXSYS Sensor and insert it face-up with the sensor electrodes facing the MiOXSYS Analyzer.



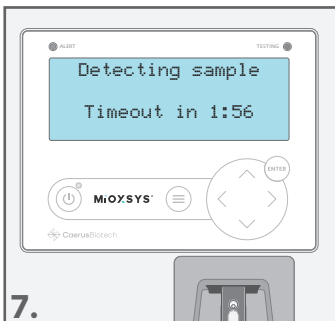
5.

Once the MiOXSYS Sensor is inserted properly "Waiting for sample" text will appear on the display, and a 2-minute countdown will begin.



6.

Using a pipette, transfer 30µL of sample to the Sample Application Port of the inserted MiOXSYS Sensor.



7.

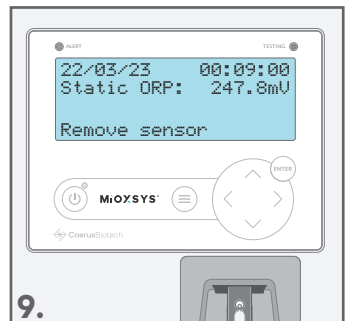
"Detecting sample" text will appear on the display if sample detection by the MiOXSYS sensor is delayed.

Note: "Detecting sample" text does not appear for every sample.



8.

Once detected, the MiOXSYS Analyzer will begin processing the sample.



9.

After the test procedure is completed sample's Static ORP level will be visible on the display.

Once the result is recorded, please discard the MiOXSYS Sensor observing the proper disposal of biological fluids guidelines.